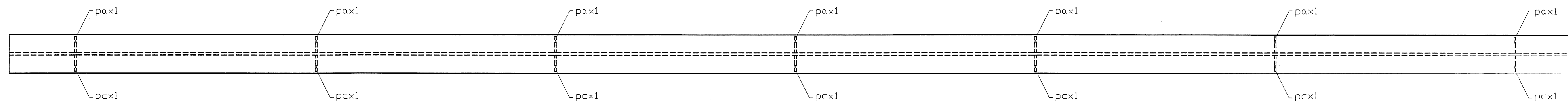
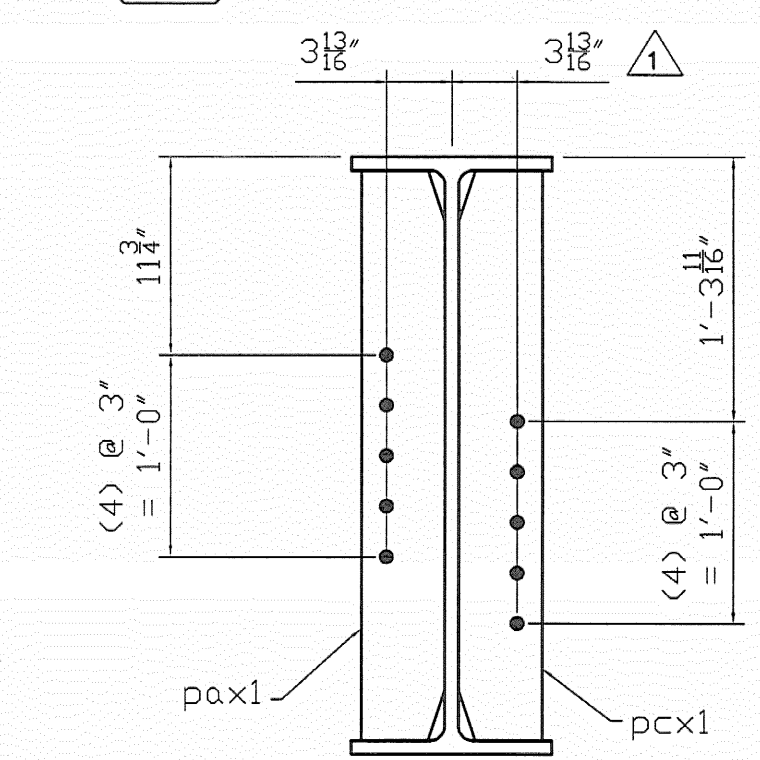
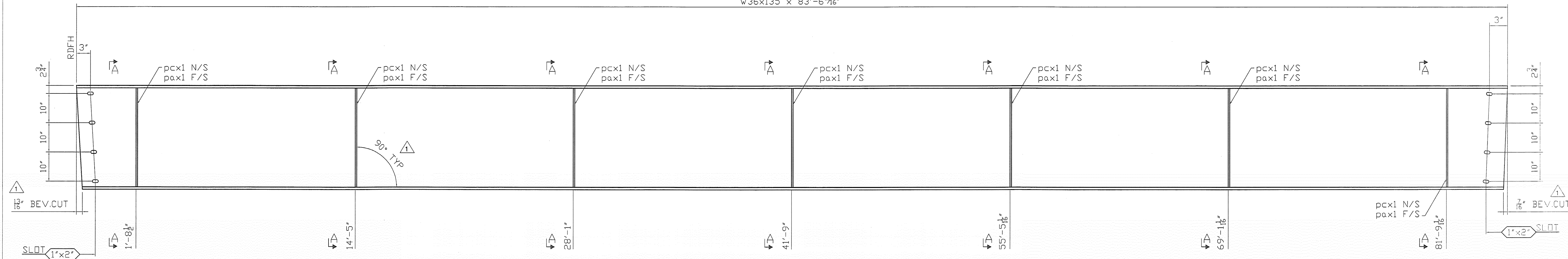


SHIPPER		BILL OF MATERIAL					
NO.	MARK	NO.	MARK	SIZE	LENGTH	REMARKS	WEIGHT
1	4A			W36X135	83'-6 1/16"	CVN/BEVEL	--
		7	pa x1	PL 1/2 x 5	2'-9 3/8"		--
		7	pc x1	PL 1/2 x 5	2'-9 3/8"		--



W36x135 x 83'-6 1/16"



SECTION A-A

RECEIVED
 OK'D BY SSS OK'D BY *mpm*
 JAN 2009
 1/20/09

NOTE:
 1. FOR GENERAL NOTES SEE GN1

SHOP NOTES
 HOLES 15/16"Ø (U.N.)
 BOLTS NONE
 PAINT SEE GN DWG
 WELDS TO BE MADE USING ER80-NiL ELECTRODES
 MATERIAL M270 Gr.50

REV. NO	DATE	APPROVER COMMENTS
1	1/9/09	REVISION

BEAM DETAIL B4

VT.102 (MAJOR COLLECTOR) BRIDGE #16 CANAAN, VT
 PROJECT NUMBER ER ST 0271 (16)

FOSTER • PRECISE
 3 FARM LANE GEORGETOWN, MA 01833
 978-352-2591 FAX 978-352-2182
 OWNER: STATE OF VERMONT AGENCY OF TRANSPORTATION
 CONTRACTOR: WINTERSSET INC.

DRAWN BY	CHECKED BY	JOB NO.	SHEET NO.
KC	WL	3476	4